

Fast Facts

Duke Energy (NYSE: DUK) is one of the largest energy holding companies in the U.S., headquartered in Charlotte, N.C.

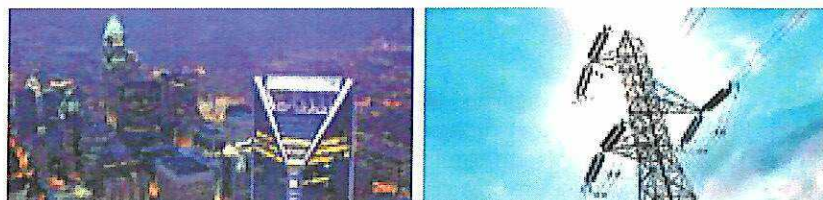
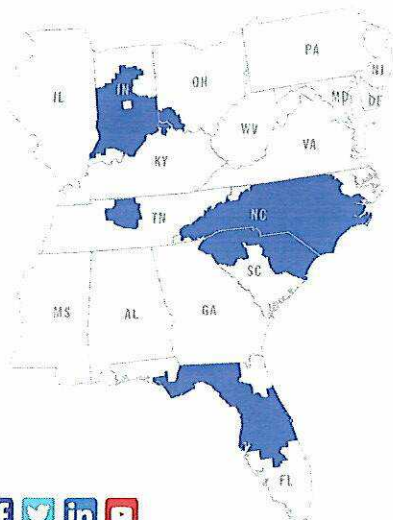
The Fortune 125 company is transforming its customers' experience, modernizing its energy grid, generating cleaner energy and expanding its natural gas infrastructure to create a smarter energy future for the people and communities it serves.

Duke Energy provides electricity to 7.6 million retail customers in six states. The electric service area's estimated population is 24 million people.

The company also provides natural gas to 1.6 million customers in five states and operates a growing renewable energy portfolio across the U.S.

Visit duke-energy.com for more information.

Electric and Gas Utilities Service Areas



Duke Energy Corporation (as of Dec. 31, 2017)

Market Cap	\$58.9 billion
Operating Revenue	\$23.6 billion
Assets	\$138 billion
Employees	29,060

Electric Utilities and Infrastructure (as of Dec. 31, 2017)

Duke Energy's Electric Utilities and Infrastructure unit operates primarily through the regulated utilities of Duke Energy Carolinas, Duke Energy Progress, Duke Energy Florida, Duke Energy Indiana and Duke Energy Ohio. The unit also is a joint owner of electric transmission projects.

States	NC, SC, IN, OH, KY, FL
Service Area	95,000 square miles
Electric Generation Capacity (owned)	49,500 megawatts (MW)
Electric Transmission Lines	31,900 miles
Electric Distribution Lines	277,100 miles
Total Electric Retail Customers	7.6 million
North Carolina	3.4 million
South Carolina	756,000
Ohio/Kentucky	850,000
Indiana	820,000
Florida	1.8 million

Gas Utilities and Infrastructure (as of Dec. 31, 2017)

Duke Energy's Gas Utilities and Infrastructure unit distributes natural gas primarily through the regulated utilities of Piedmont Natural Gas and Duke Energy Ohio.

Total Natural Gas Customers	1.6 million
North Carolina	735,000
South Carolina	145,000
Ohio/Kentucky	533,000
Tennessee	184,000
Natural Gas Transmission and Distribution Pipelines	33,100 miles
Natural Gas Service Lines	27,400 miles

Duke Energy Carolinas

Duke Energy Carolinas is a regulated public utility primarily engaged in the generation, transmission, distribution and sale of electricity in portions of North Carolina and South Carolina. Duke Energy Carolinas' service area covers approximately 24,000 square miles and supplies electric service to 2.5 million residential, commercial and industrial customers. Owned summer generation capacity: 19,600 megawatts (MW).*

Duke Energy Progress

Duke Energy Progress is a regulated public utility primarily engaged in the generation, transmission, distribution and sale of electricity in portions of North Carolina and South Carolina. Duke Energy Progress' service area covers approximately 32,000 square miles and supplies electric service to approximately 1.5 million residential, commercial and industrial customers. Owned summer generation capacity: 12,800 megawatts (MW).*

Duke Energy Indiana

Duke Energy Indiana is a regulated public utility primarily engaged in the generation, transmission, distribution and sale of electricity in portions of Indiana. Duke Energy Indiana's service area covers 23,000 square miles and supplies electric service to 820,000 residential, commercial and industrial customers. Owned generation summer capacity: 6,700 megawatts (MW).*

Duke Energy Ohio/Kentucky

Duke Energy Ohio is a regulated public utility primarily engaged in the transmission and distribution of electricity in Ohio and Kentucky, the generation and sale of electricity in Kentucky, and the distribution and sale of natural gas in Ohio and Kentucky.

Duke Energy Ohio's service area covers approximately 3,000 square miles. The utility provides electric service to approximately 850,000 residential, commercial and industrial customers. It also provides natural gas service to approximately 533,000 customers. Owned summer electric generation capacity: 1,100 megawatts (MW).*

Duke Energy Florida

Duke Energy Florida is a regulated public utility primarily engaged in the generation, transmission, distribution and sale of electricity in portions of Florida. Duke Energy Florida's service area covers approximately 13,000 square miles and supplies electric service to approximately 1.8 million residential, commercial and industrial customers. Owned summer generation capacity: 9,300 megawatts (MW).*

Duke Energy Renewables

Duke Energy Renewables primarily acquires, develops, builds and operates wind and solar electric generation facilities across the U.S. The portfolio includes nonregulated renewable energy, as well as energy storage assets.

Duke Energy Renewables' utility-scale wind and solar assets total about 2,900 megawatts (MW) – across 14 states – from 21 wind and 64 solar projects. The power produced by these projects is primarily sold through long-term contracts to utilities, electric cooperatives, municipalities, and commercial and industrial customers.*

Visit [Duke Energy Renewables](#) for more information.

Piedmont Natural Gas

Piedmont Natural Gas is an energy services company whose principal business is the distribution of natural gas to more than 1 million residential, commercial and industrial customers, as well as power plants, in North Carolina, South Carolina and Tennessee.

Piedmont is routinely recognized by J.D. Power for excellent customer satisfaction and was named by Cogent Reports in 2017 as one of the most trusted utility brands in the U.S.

Piedmont Natural Gas is a subsidiary of Duke Energy.*

Visit [Piedmont Natural Gas](#) for more information.

* All data as of Dec. 31, 2017.